

# Small and Medium Enterprise Network Management System

- Network Management
- Fault Management
- Performance Management
- System Management



**HANTZ**  
**SME NMS**

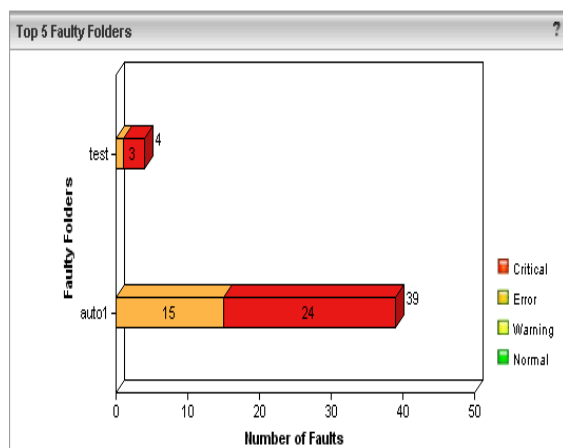
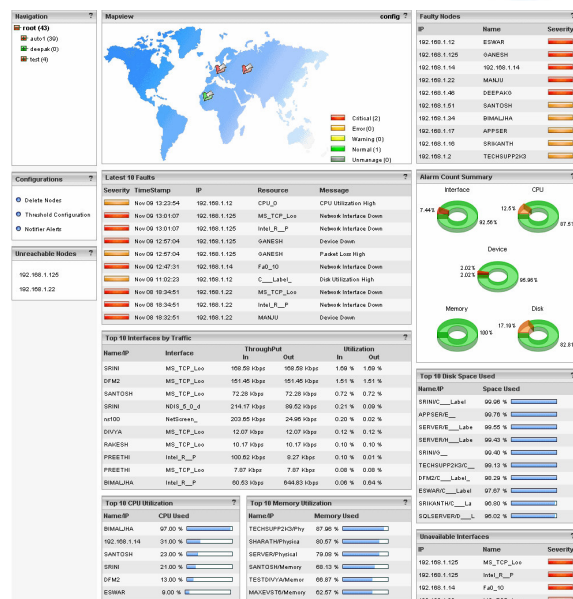
## Hantz SME NMS – A Complete Small and Medium Enterprise Network Monitoring Solution

Hantz SME NMS is an integrated network infrastructure monitoring and management software that provides proactive fault and performance management solution for small and medium enterprises. With Hantz SME NMS, you can diagnose performance issues in your network infrastructure and resolve them before they cause costly downtime. With its wide range of features, Hantz SME NMS maximizes the business availability and Return on Investment.

### Key Features

#### Integrated Network Monitoring and Management

Hantz SME NMS provides an integrated view of the entire monitored network within a single Hawk Eye view. Within this single screen, you can view your network infrastructure based on their geographic locations, view faulty resources, get latest alarms, view interfaces with high traffic or are unavailable, nodes with high CPU and Memory usage, etc. These views facilitate easy management of your network infrastructure.



#### Effective Fault Monitoring and Management

Fault management is one of the vital challenges the network operators face. Most of the times, identification and analysis of the root cause of the problem is more time-consuming than the fixing. Hantz SME NMS helps in constantly monitoring the network devices, thereby providing periodic statistics of nodes. Hantz SME NMS presents the all the faults generated in the network, which helps the network operators take remedial actions quickly. Multiple colors are used to depict different kinds of faults

## Performance Monitoring

Hantz SME NMS is equipped with the ability to constantly monitor a wide range of performance parameters. Some of the performance parameters include memory used, interface availability, network traffic, CPU utilization, network availability, disk space, error rate, packet loss, etc. These details provide the network operators an in-depth analysis and visibility into the performance of their network devices.

Sl.No	Name/IP	Memory Used
1	TECHSUPP2K3	81.88 %
2	SERVER	81.41 %
3	SHARATH	74.53 %
4	SANTOSH	68.37 %
5	TESTDIVYA	66.88 %
6	MAXEVST6	62.64 %
7	DFM2	56.32 %
8	GAURAV	55.65 %
9	SHARATH	55.03 %
10	TECHSUPP2K3	53.57 %

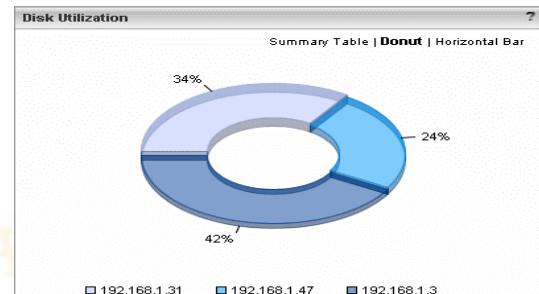
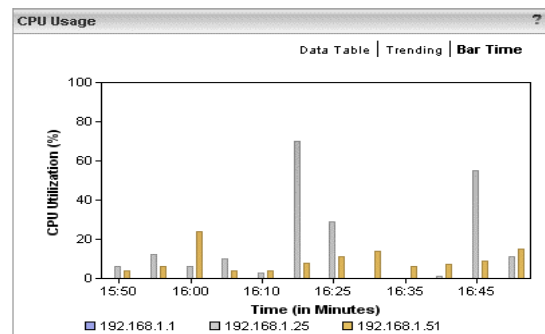


## Notification Mechanism

Hantz SME NMS is equipped with an inbuilt notification mechanism to notify the user whenever a fault occurs in the network. IT managers and operators can configure Hantz SME NMS to send emails or have a beeper to a specific user, when an incident happens in the network such as a critical alarm is raised, network has performance issues, devices are down or unreachable, etc.

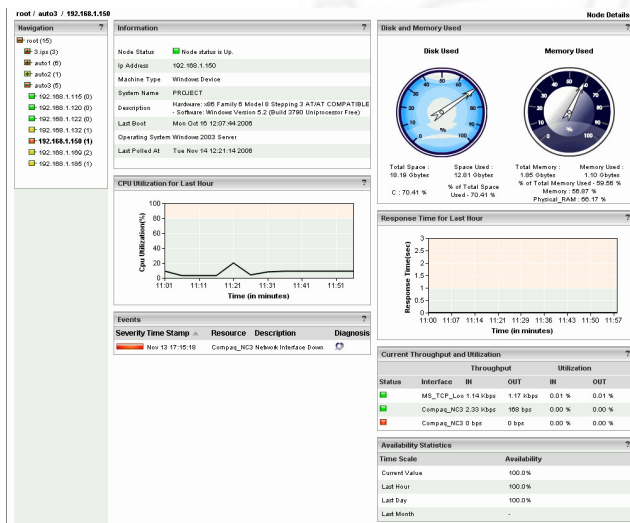
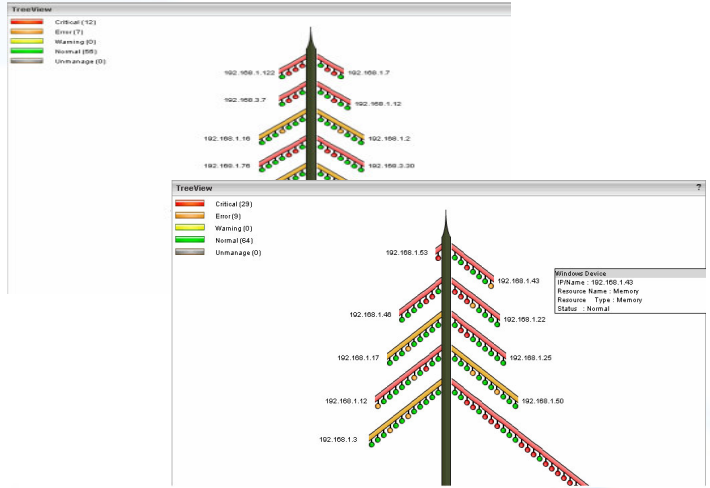
## Comprehensive & User-Friendly Reports

Reporting is an important function in any infrastructure management system. Hantz SME NMS's real-time reports provide comprehensive reporting on network availability, network utilization, throughput, CPU usage, Packet Loss, Disk Utilization, memory used, and error rate. A combination of different sets of pre-configured reports gives the user a single page report listing vital statistics.



## Tree View

The Tree View screen of Hantz SME NMS displays the latest Top 10 Faulty nodes, arranged in the form of tree branches, based on the Number of Alarms raised and their Severity. You can do a mouse over on any Node displayed on the branches of the Tree View to view more details about a node.



## Node View

The Nodes View screen displays the node details, such as the IP Address, Name, and the their Type. Hantz SME NMS enables you to drill-down to any specific node to view Node Details, a comprehensive report on that node.

The Nodes Details page displays the Node Information, Disk and Memory Used, CPU Utilization for Last Hour, Response Time for Last Hour, Events, Current Throughput and Utilization, and Availability Statistics.

## Automatic Discovery

The Auto Discovery module in Hantz SME NMS discovers the resources in the monitored network. Hantz SME NMS pings all the devices in the network and learns them. It simplifies the network management, allowing the network operators to add all the discovered resources or specific resources.



## Business Benefits

- **Integrated View of the Entire Network:** Hawk Eye view of Hantz SME NMS provides a single view where you can get an overview of the entire network.
- **Intelligent Capacity Planning and Resource Allocation:** Real-time reports on Memory utilization, CPU usage, Disk Space utilization, Interface Traffic, Packet Loss, etc. helps you to take better capacity planning decisions.
- **Increased Network Operator Productivity:** The color-coded alarm status, intelligent alarm correlation, and timely notification of faults save the network operators time in root cause analysis and problem solving.
- **Maximum Network Availability:** By constantly monitoring the network performance and notifying when any critical alarms occur, Hantz SME NMS ensures maximum availability of the monitored network.
- **Increased ROI:** With its wide range of productivity-enhancing features, Hantz SME NMS enables you to run your business smoothly by ensuring round the clock availability of your network and maximizing your return on investment.

## About HSB Soft Technologies

“Passion for technology” is the driving force at HSBSOFT Technologies. In every single venture there is an impetus on improvisation and an enthusiasm to provide leading cutting edge solutions. In fact these are the tenets followed right across the organization be it our clients, employees or investors.

Headquartered in the IT Capital of India – Bangalore, HSBSOFT Technologies started operations in February 2004. Initially our area of specialization was Network Technologies but over the past few months, our offerings in the technology segments have encompassed Network Support Services, Enterprise Service Management, Wireless technologies, E-services, and distributed applications.

**Website:** [www.hsbssoft.com](http://www.hsbssoft.com)

**Technical Inquiries:** [techsupport@hsbssoft.com](mailto:techsupport@hsbssoft.com)

**Sales Inquiries:** [sales@hsbssoft.com](mailto:sales@hsbssoft.com)

**Tel:** 0091-80 4113 1162 /63 / 64

**Fax:** 0091- 80 2235 4952