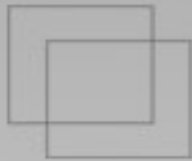




**HANTZ**  
**OEM**



**An Easy-to-Use  
Enterprise Network Management System**



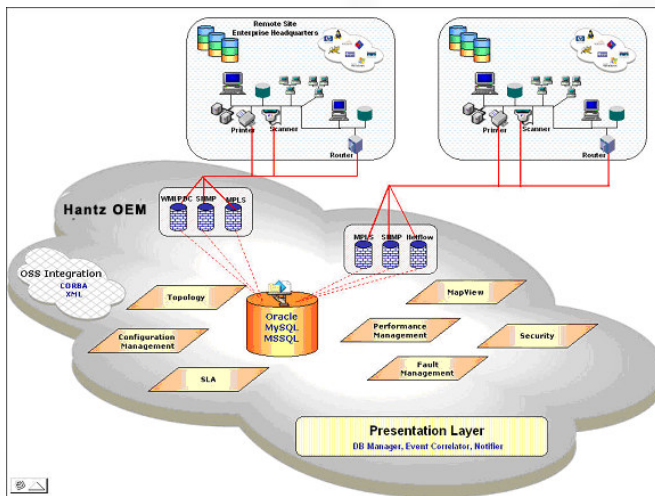
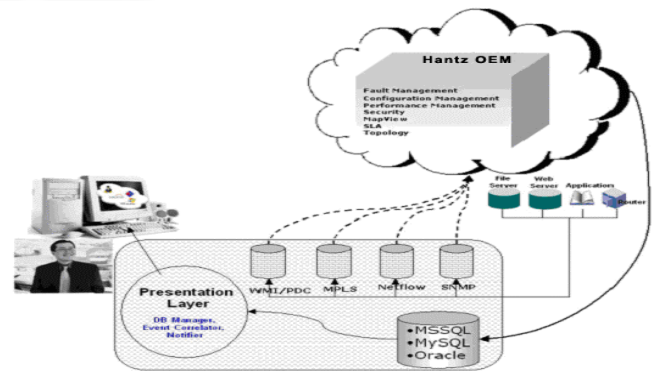
## Hantz OEM – A Carrier-Grade Network Management Framework for Building Custom EMS and NMS Applications

Hantz OEM is a carrier-grade, scalable network management platform that facilitates hassle-free monitoring and management of critical network infrastructure. Network equipment vendors and network management solution providers can leverage Hantz OEM to develop element management systems (EMS) and network management systems (NMS).

### Flexible Deployment Architecture

Hantz OEM's robust Single Server and Distributed Deployment architecture enable equipment vendors to develop EMS and NMS applications for both small and big enterprises.

**Single Server Deployment:** A Single Server deployment of Hantz OEM can be a cost-effective solution to Small and Medium Enterprises. The main components of the Single Server deployment of Hantz OEM are the databases, the presentation layer, and the various pollers integrated into a single system.



**Distributed Deployment:** Distributed deployment of Hantz OEM helps to manage huge heterogeneous networks that are dispersed at various locations. In Distributed deployment, each of the pollers monitors devices from various locations and consolidates the data at the centralized database server. The presentation layer of Hantz OEM then processes the data and provides a single point representation of the entire network.

The distributed architecture of Hantz OEM provides support for load balancing across multiple physical servers, eliminating performance bottlenecks due to a single hardware platform and therefore improving overall system performance.

Hantz OEM scales to manage networks of any size. Its intelligent filtering and consolidation helps to keep the management information transmitted via the network to manageable proportions.

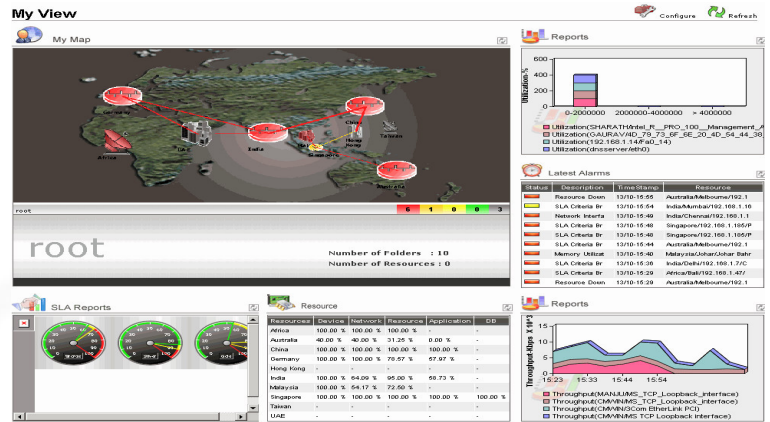


## Customization Capabilities

Hantz OEM can easily be customized to cater to the various requirements of network equipment vendors. The robust and scalable Hantz OEM platform enables advanced customization to various technologies/domains, such as ATM, SONET/SDH, Optical, VoIP, VPN, Cable, and Wireless.

## Integrated Network Visibility

Hantz OEM provides an integrated view of the entire monitored network within a single Hawk Eye view. Within this single screen, you can view your network infrastructure based on their geographic locations, view faulty resources, get latest alarms, view interfaces that face high traffic or unavailable, nodes that face high CPU and Memory usage, etc. These views facilitate easy management of your network infrastructure.



Resources	Device Availability	Network Availability	Resource Availability	Application Availability	DB Availability
Africa	100.00 %	100.00 %	100.00 %	-	-
Australia	69.09 %	69.55 %	56.38 %	37.32 %	-
China	100.00 %	100.00 %	100.00 %	100.00 %	-
Germany	100.00 %	100.00 %	78.57 %	57.97 %	-
Hong Kong	-	-	-	-	-
India	100.00 %	53.69 %	95.00 %	59.73 %	-
Malaysia	100.00 %	59.09 %	75.45 %	-	-
Singapore	100.00 %	100.00 %	100.00 %	100.00 %	100.00 %
Taiwan	-	-	-	-	-
UAE	-	-	-	-	-

## Performance Management

Today's network infrastructure deploys diverse range of technologies and protocols, spanning across multiple geographical locations. This makes network management a challenge to IT operators. Hantz OEM offers effective solutions that help IT operators manage their network infrastructure effortlessly.

- Proactive network infrastructure management
- Bandwidth management
- Traffic management

## Fault Management

Fault management is one of the vital challenges the network operators face. Most of the times, identification and analysis of the root cause of the problem is more time-consuming than the fixing. Hantz OEM helps in constantly monitoring the network devices, thereby providing periodic statistics of nodes. Hantz OEM presents all the faults generated in the network, which helps the network operators take remedial actions quickly. Multiple colors are used to depict different kinds of faults.

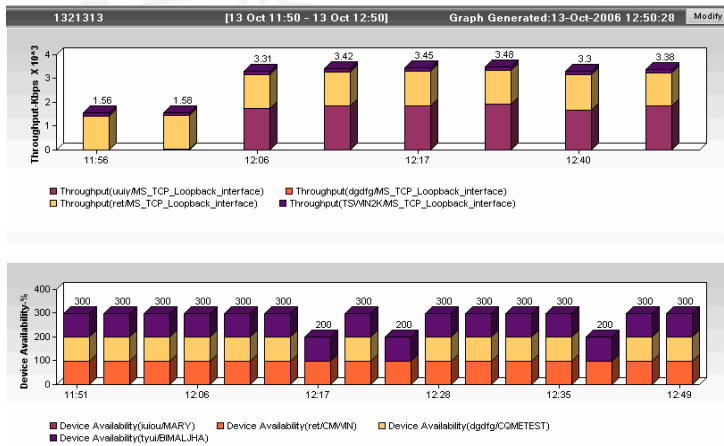
## Alarms

Type	Time Stamp	Resource	Description	Options
SLA Criteria Breached 70 percentage	Fri Oct 13, 2006 15:56:59	India/Delhi/192.168.1.7/CPU_0	SLA Criteria Breached 70 percentage	
Resource Down	Fri Oct 13, 2006 15:55:16	Australia/Melbourne/192.168.1.22/Process /TEIP	Resource Down	
SLA Criteria Breached 85 percentage	Fri Oct 13, 2006 15:54:15	India/Mumbai/192.168.1.16/Intel_R_PRO_1_00_VE	SLA Criteria Breached 85 percentage	
Network Interface Down	Fri Oct 13, 2006 15:49:13	India/Chennai/192.168.1.14/Fa0_7	Network Interface Down	
SLA Criteria Breached 75 percentage	Fri Oct 13, 2006 15:48:38	Singapore/192.168.1.185/Processor/Total	SLA Criteria Breached 75 percentage	
SLA Criteria Breached 75 percentage	Fri Oct 13, 2006 15:48:38	Singapore/192.168.1.185/Processor/0	SLA Criteria Breached 75 percentage	
SLA Criteria Breached 70 percentage	Fri Oct 13, 2006 15:44:08	Australia/Melbourne/192.168.1.22/Intel_R_PRO	SLA Criteria Breached 70 percentage	
Memory Utilization High	Fri Oct 13, 2006 15:40:05	Malaysia/Johar/Johar Bahru/192.168.1.35/Memor	Memory Utilization High	
SLA Criteria Breached 75 percentage	Fri Oct 13, 2006 15:36:43	India/Delhi/192.168.1.7/CPU_0	SLA Criteria Breached 75 percentage	
SLA Criteria Breached 70 percentage	Fri Oct 13, 2006 15:29:50	Africa/Bali/192.168.1.47/Intel_R_PRO_10_0_VE	SLA Criteria Breached 70 percentage	
Resource Down	Fri Oct 13, 2006 15:29:50	Australia/Melbourne/192.168.1.22/Process /Sgao	Resource Down	
SLA Criteria Breached 75 percentage	Fri Oct 13, 2006 15:28:51	Australia/Melbourne/192.168.1.22/Intel_R_PRO	SLA Criteria Breached 75 percentage	



## Notification, Escalation, and Acknowledgement

Hantz OEM keeps track on the performance of the monitored network. When it detects faults or degradation of performance, it notifies the IT manager or operator about it and helps in rectification of the faults. Hantz OEM provides multiple notification mechanisms, such as Email, SMS, Beep, System Batch File Notifications, and SNMP Trap. With its powerful multi-grouping mechanism in notification coupled with the correlation technologies, Hantz OEM sends notifications to the network operators and multiple hierarchies and at the same time to the customers, ensuring higher levels of customer satisfaction. The escalation and acknowledgement features ensure that the critical alarms are addressed by the operators in time, ensuring the high service levels promised to the customer.

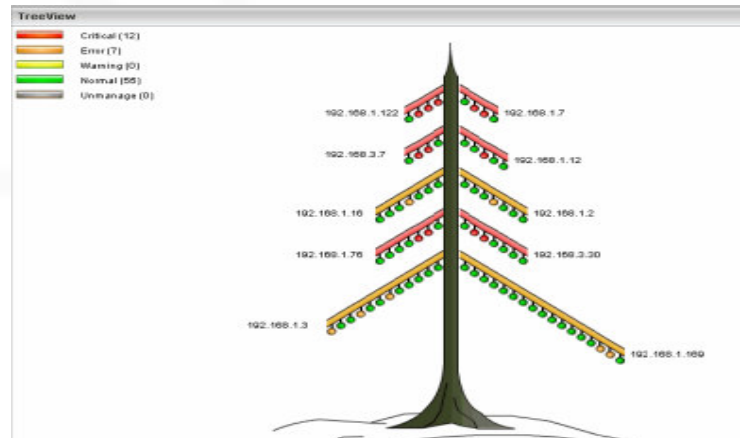


## Comprehensive Reporting

Reporting is an important function in any infrastructure management system. Hantz OEM's real-time reports provide comprehensive reporting on network availability, network utilization, throughput, CPU usage, Packet Loss, Disk Utilization, memory used, and error rate. A combination of different sets of pre-configured reports gives the user a single page report listing vital statistics.

## Tree View

The Tree View screen of Hantz OEM displays the latest Top 10 Faulty nodes, arranged in the form of tree branches, based on the Number of Alarms raised and their Severity. You can do a mouse over on any Node displayed on the branches of the Tree View to view more details about a node.



## Node View

The Nodes View screen displays the node details, such as the IP Address, Name, and their Type. Hantz OEM enables you to drill-down to any specific node to view Node Details, a comprehensive report on that node.

**Navigation:** root / sub03 / 192.168.1.150

**Information:** Node Status: Up, IP Address: 192.168.1.150, System Name: PROJECT, Description: Hardware: x86 Family 0 Model 0 Stepping 3 01/AT/COMPATIBLE, Operating System: Microsoft Windows 2000 Server, Last Posted: Tue Nov 14 12:21:14 2006

**Disk and Memory Used:** Disk Used: 70.41%, Memory Used: 59.56%

**CPU Utilization For Last Hour:** Graph showing CPU usage over time.

**Events:** Nov 15 17:15:18 Comp#\_MCS Network Interface Down

**Current Throughput and Utilization:** Table showing interface status, IN/OUT throughput, and utilization.

**Availability Statistics:** Table showing availability percentage for different time scales.

The Nodes Details page displays the Node Information, Disk and Memory Used, CPU Utilization for Last Hour, Response Time for Last Hour, Events, Current Throughput and Utilization, and Availability Statistics.



HANTZ  
OEM

## About HSB Soft Technologies

**"Passion for technology"** is the driving force at HSBSOFT Technologies. In every single venture there is an impetus on improvisation and an enthusiasm to provide leading cutting edge solutions. In fact these are the tenets followed right across the organization be it our clients, employees or investors.

Headquartered in the IT Capital of India – Bangalore, HSBSOFT Technologies started operations in February 2004. Initially our area of specialization was Network Technologies but over the past few months, our offerings in the technology segments have encompassed Network Support Services, Enterprise Service Management, Wireless technologies, E-services, and distributed applications.

**Website:** [www.hsbssoft.com](http://www.hsbssoft.com)

**Technical Inquiries:** [techsupport@hsbssoft.com](mailto:techsupport@hsbssoft.com)

**Sales Inquiries:** [sales@hsbssoft.com](mailto:sales@hsbssoft.com)

**Tel:** 0091-80 4113 1162 /63 / 64

**Fax:** 0091- 80 2235 4952