



HANTZ
Enterprise



**An Easy-to-Use
Enterprise Network Management System**

Hantz Enterprise – A Complete Enterprise Network Management System

An enterprise solution should use and manage technology to serve the organization's purpose, not to be bogged down by it. Technology should lend a hand in improving a business—not eat the time and resources meant for business operations in the first place. With Hantz Enterprise, technologies that comprise your business arsenal are broken down into business processes—sets of activities that can be planned, monitored, managed, and appropriately modified and fine-tuned as and when the business demands it. Hantz Enterprise's powerful infrastructure management solution provides the following key features:

Infrastructure Mapping

Hantz Enterprise automatically discovers devices that support SNMP, discover IP Networks and their segments, LANs, hosts, switches, routers, frame relay and PVC circuits, among others. Using Hantz Enterprise you can establish the connections among these elements, and correlate them with one another.



Overview Customization

Hantz Enterprise's Overview screen provides a bird's eye view of the monitored network infrastructure. From this screen, you can effortlessly view and manage the performance of entire IT infrastructure, such as devices, networks, servers, databases, applications, platforms and websites. The system provides 10 types of views.

The Overview Configuration screen in Hantz Enterprise allows you to customize your own summary views in the Overview screen.

Map View

As your infrastructure crosses over a diverse range of network technologies and protocols, and spans across disparate physical locations, Hantz Enterprise empowers you to tackle your infrastructure management concerns by providing a single point of solutions for all these diverse elements. Map view helps you to navigate through the different levels of the mapped infrastructure.



Resource #	Device Availability	Network Availability	Resource Availability	Application Availability	SLA Availability
India	100.00 %	100.00 %	100.00 %		
Australia	99.00 %	99.00 %	99.00 %	97.00 %	
China	100.00 %	100.00 %	100.00 %	100.00 %	
Germany	100.00 %	100.00 %	75.00 %	97.00 %	
Japan	100.00 %	95.00 %	95.00 %	99.00 %	
London	100.00 %	99.00 %	75.00 %		
Shanghai	100.00 %	100.00 %	100.00 %	100.00 %	100.00 %
Sydney					
USA					

[Displaying 1 % of 31 Performance]

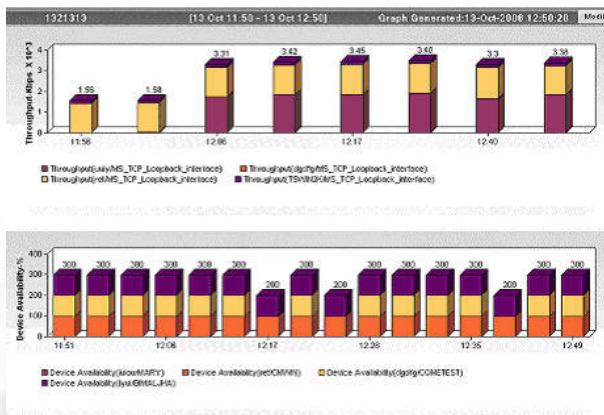
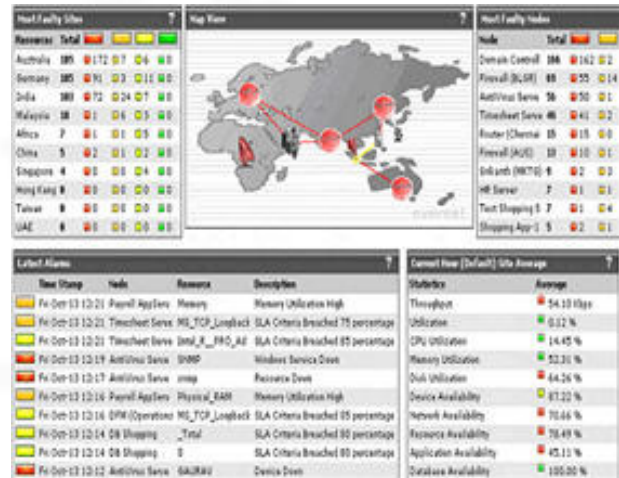
Network Performance Monitoring

Hantz Enterprise emulates a real-user experience and finds the overall response time of the application, server, and the network. The integrated view on the user-experienced response times with the actual network, server, and application QoS parameters enable the operators to find the root cause of any degraded services across heterogeneous networks, network devices, servers, and applications. It displays information, such as availability, error rate, throughput, utilization and response time of communication links, servers and applications, and other statistics. You can select to view Average, Worst, or Threshold statistics.

Fault Management

Hantz Enterprise empowers you to detect potential and actual faults before they occur and/or impact your services by providing various services and user-friendly views for the operator:

- Event and Alarm Management
- Event Correlation
- Notification, Acknowledgement & Escalation
- SNMP Trap Management
- Syslog Management



Comprehensive & User-Friendly Reports

Reporting is an important function in any infrastructure management system. Hantz Enterprise's real-time reports provide comprehensive reporting on network availability, network utilization, throughput, CPU usage, Packet Loss, Disk Utilization, memory used, and error rate.

Business Benefits

- **Integrated View of the Entire Network:** Overview of Hantz Enterprise provides a single view where you can get an overview of the entire network.
- **Intelligent Capacity Planning and Resource Allocation:** Real-time reports on Memory utilization, CPU usage, Disk Space utilization, Interface Traffic, Packet Loss, etc. helps you to take better capacity planning decisions.
- **Increased Network Operator Productivity:** The color-coded alarm status, intelligent alarm correlation, and timely notification of faults save the network operators time in root cause analysis and problem solving.
- **Maximum Network Availability:** By constantly monitoring the network performance and notifying when any critical alarms occur, Hantz Enterprise ensures maximum availability of the monitored network.

About HSBSOFT Technologies

“**Passion for technology**” is the driving force at HSBSOFT Technologies. In every single venture there is an impetus on improvisation and an enthusiasm to provide leading cutting edge solutions. In fact these are the tenets followed right across the organization be it our clients, employees or investors.

Headquartered in the IT Capital of India – Bangalore, HSBSOFT Technologies started operations in February 2004. Initially our area of specialization was Network Technologies but over the past few months, our offerings in the technology segments have encompassed Network Support Services, Enterprise Service Management, Wireless technologies, E-services, and distributed applications.

Website: www.hsbsoft.com

Technical Inquiries: techsupport@hsbsoft.com

Sales Inquiries: sales@hsbsoft.com

Tel: 0091-80 4113 1162 /63 / 64

Fax: 0091- 80 2235 4952