

Digital Infrastructure Solutions

# Everest

**A powerful, cost-effective, and scalable solution that helps you take control of your IT network.**

Everest is a complete end-to-end network management system that helps you efficiently and effectively manage heterogeneous IT environments. By proactively managing your critical IT Infrastructure, Everest ensures your business agility, reduces operational costs, increases network resilience, and ultimately improves your ROI. Everest's enhanced features can easily scale to meet the needs of the largest enterprise and most advanced networks.



- Auto Discovery
- Root Cause Analysis
- Impact Analysis
- Corrective Action
- User specific GUI's
- Notifications with escalations

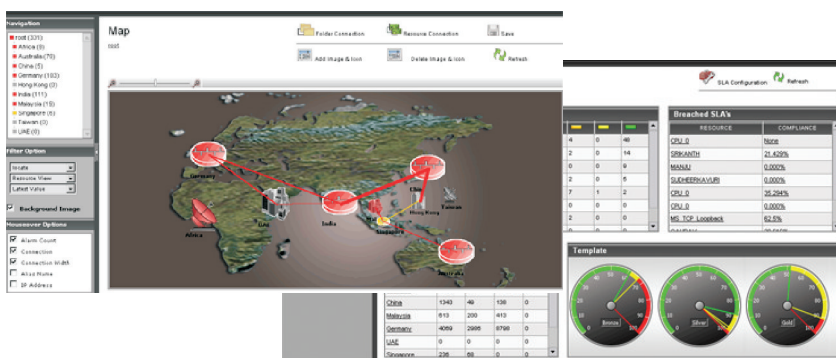
## Gain business traction in an on-demand world

Everest assures your business agility by anticipating problems, isolating performance issues, and allowing you to manage change in real time.

Rapidly identify and resolve root causes of IT infrastructure faults

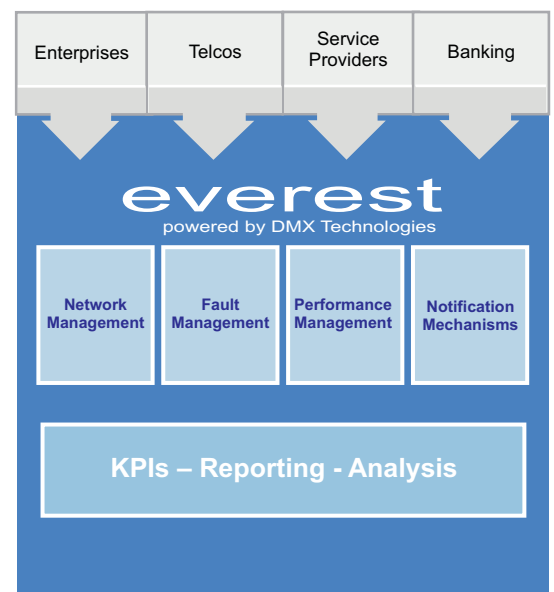
Everest helps you to proactively capture, report, and act on events that may impact your network performance. The solution leverages on specific root cause and impact analysis to pinpoint singular IT problems, as well as reveal the node(s) of impact combined with information on how to find the problem and fix it. Operators can monitor issues through user friendly views which are internally powered by powerful mechanisms like:

- Event and Alarm Management
- Event Correlation
- Notification, Acknowledgement & Escalation
- Syslog Management



### Quick and efficient infrastructure discovery and mapping

Everest eases the workload on IT staff through automatic discovery and topology mapping, accurately building a logical network map for easy navigation. The software automatically, discovers IP Networks and their segments, LANs, hosts, switches, routers, frame relay and PVC circuits, among others. The Discovery module possesses the ability to detect the actual relationship between individual network elements. This significantly helps in correlating information and the events that relate to them. A simplified, easy-to-use view of network devices, MIBs and events, reduces the time to find individual network elements.



- Quick access to actionable information
- Minimize the cost of downtime
- Radically decrease mean time to repair
- Visibility across different vendors and technologies
- Scalability to manage your growing business



# Empowering you to respond to crises proactively

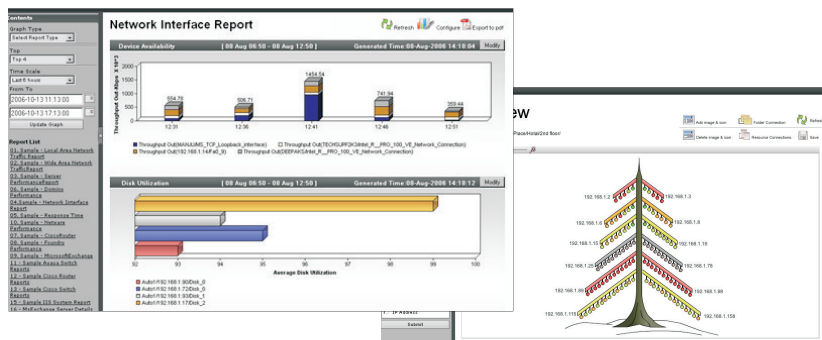
With Everest it's almost like peering into the future and solving issues before they impact the enterprise.

Flexible customization options offering unified insight into IT asset status

The Everest Overview console provides a high-level view of the monitored network infrastructure as well as the ability to drill down to network specifics. The console also offers you powerful customization options to create your own summary views.

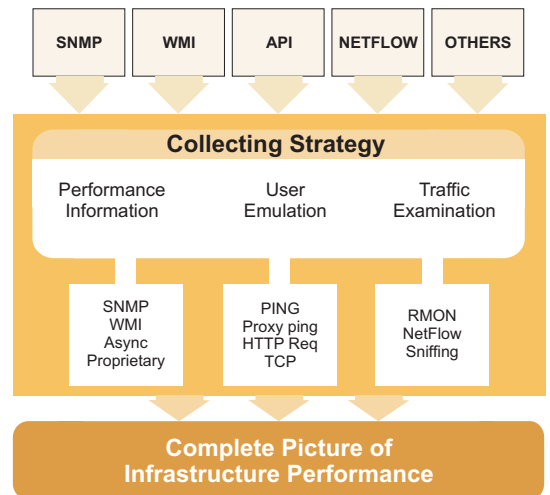
Dynamic reports to help you explore trends and gather information

Data without context is useless. Everest offers you elegant and easily customizable out-of-the-box reports ensuring the reporting of information in a manner that is most apt for your enterprise. You can view real-time reports on network availability, network utilization, throughput, CPU usage, packet loss, disk utilization, memory used, and error rate.



## Ensure effective and vigilant Service Level Management

Everest allows you to establish and manage user expectations through explicit and measurable performance and availability guarantees. You can easily define measurable service indicators that affect your bottom line, and translate them to binding guarantees from internal or external providers using SLAs. The Everest SLM feature supports a flexible SLA definition to address your most complicated requirements such as pre-defined scheduled downtime, mix-and-match of multiple statistics with Boolean operators based on any of the statistics monitored by Everest.



# Power your business ahead with Everest

## Future-proof your IT infrastructure growth

Everest's distributed, but data centric, architecture ensures that your monitoring system can be scaled up with the growth of your network and keeping pace with high quality of service for new rolled out services. This improves the time to create new services and provides you with a strong competitive advantage.

## Harmonize deployment and reduce the burden on IT resources

Everest offers you ease-of-deployment options that allow you to quickly and easily install the software. Additionally its low footprint and light infrastructure help control TCO while allowing for efficient data collection.

## Harness the power of technology

When it comes to technology Everest is way ahead of the pack. The solution supports a wide range of network protocols like WMI, SNMP, PDC, Netflow, MPLS, Syslog, XML, Corba, and a host of others.

## Web enabled for easy and constant access

Everest helps you leverage the power of the web by offering you anytime, anywhere access through a web browser.

Everest – Enables the intelligent and integrated network



### About DMX

Aspired to be a forerunning IT solution provider, DMX Technologies specializes in providing a wide range of digital multimedia solutions, network infrastructure and professional services to service providers, cable TV operators, broadcasters, media and entertainment corporations, mobile operators and enterprises. Established in 1999, DMX has built an extensive regional network in the Asia Pacific region, including Greater China, Indonesia, India, Korea, Malaysia and Singapore.

For more information about DMX Technologies, please visit:  
[www.dmxtechnologies.com](http://www.dmxtechnologies.com)

### HSBSoft Technologies Pvt. Ltd. (DMX Partner)

No. 517-520 Prestige Center Point, Cunningham Road,  
Bangalore 560052, INDIA  
Tel : +91 80 4113 1162 / 63 / 64, Fax : +91 80 2235 4952  
Sales : [sales@hsbsoft.com](mailto:sales@hsbsoft.com)

