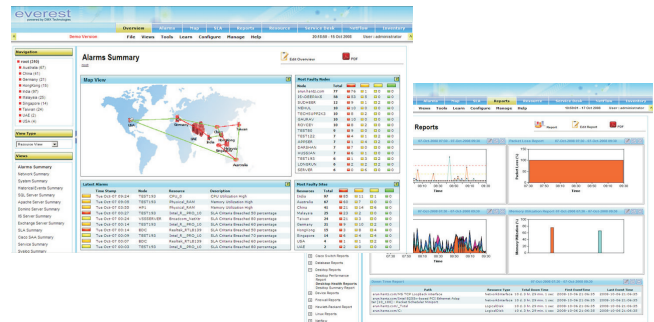


Everest is a complete end-to-end IT infrastructure management solution that helps to simplify network and systems management by monitoring, managing and optimizing system performance and availability across heterogeneous IT environments.



Key Advantages of Everest

- ✍ All in one integrated solution with Fault and Performance management along with Inventory management and Service desk
- ✍ Web based GUI for easy access with no client installations required
- ✍ Agent less deployments Uses standard protocols
- ✍ Modular and Distributed architecture
 - ✍ Multi-level distribution support with local and centralized access
 - ✍ Support for remote operations on local servers
 - ✍ Secure data transfer between remote and central servers
 - ✍ Scalable solution with multi location expansion
- ✍ Easy adaptation to new devices / applications

Fault Management:

- ✍ Multi-mode fault detection
- ✍ Multi-level threshold with severity
- ✍ Multi-mode notification with escalation
- ✍ In-built auto-correlation mechanism
- ✍ Trigger auto correction mechanisms
- ✍ Instant diagnosis options
- ✍ Status propagation to all levels of network

Performance Management:

- ✍ Multi-aspect performance tracking
 - ✍ Network performance
 - ✍ System performance
 - ✍ Server performance
 - ✍ Application performance
- ✍ Dashboards for multi-angle information
- ✍ Thresholds support for instant analysis
- ✍ Multilevel data aggregation of network
- ✍ Extensive Performance based reports
- ✍ SLA management

Inventory Management:

- ✍ Complete network coverage
- ✍ Exclusive views for
 - ✍ OS information
 - ✍ Hardware information
 - ✍ Software information
 - ✍ Application information
 - ✍ Hot-fix information
- ✍ Search and filter options
- ✍ Consolidated Node View
- ✍ Support for node level operations
- ✍ Agent and Non Agent Based

Service Desk Management:

- ✍ Special framework for defining
 - ✍ Products / Services
 - ✍ Categories / sub-categories
- ✍ Define service templates
- ✍ Record Customer information
- ✍ End to end management of Incidents
- ✍ Inbuilt notification and escalation
- ✍ Service desk reports
- ✍ Support for Internal knowledge base
- ✍ Customer and User specific Custom reports
- ✍ Separate Service Desk Accounts

Enhanced Content-Rich Views

- ✍ Overview
- ✍ Alarms
- ✍ Events
- ✍ Traps
- ✍ Syslog
- ✍ IP View
- ✍ Resource
- ✍ Performance
- ✍ Node View
- ✍ Multi-level network representation with drill down options

Robust Discovery of Resources

- ✍ Topology Discovery
- ✍ Scheduled Automatic Discovery
- ✍ Protocols Supported (such as SNMP v1, v2c and v3, WMI, Netflow, RMON, Syslog, HTTP, HTTPS, FTP, SMTP, POP3, Trace route, ping, CDP, NDP, Spanning Tree, MPLS proxy ping, and Cisco SAA)

Immediate Fault Detection

- ✍ Polling and trap based alarm detection
- ✍ Resource/statistic level multi-threshold configuration support
- ✍ Hold time support for alarm creation & removal
- ✍ Multi-level severity support
- ✍ Integrated correlation mechanism for identification and presentation of root cause and dependant alarms
- ✍ Instant diagnosis options - SNMP walk/trace route/ping
- ✍ Support for adding comments and building internal knowledge base
- ✍ Sieve filtering and alert options
- ✍ Maintenance of historical events with filter options
- ✍ Support for audit trail
- ✍ Syslog management with extensive filtering and alert options

Notification And Escalation

- ✍ Multi-mode notification
 - ✍ SMS, e-mail, batch, syslog, SNMP trap, beeper, XML, etc
- ✍ Multi-level escalation support
- ✍ Support for notification by
 - ✍ Time selection
 - ✍ Node grouping

Monitored Performance Statistics

- ✍ Network Availability
- ✍ Application Availability
- ✍ Resource Availability
- ✍ Database Availability
- ✍ Network Utilization
- ✍ Network Throughput
- ✍ Error Traffic
- ✍ Overflow traffic
- ✍ CPU Utilization
- ✍ Disk Utilization
- ✍ Memory Utilization
- ✍ Buffer Overflow
- ✍ Latency
- ✍ Packet Loss
- ✍ Jitter
- ✍ Ping Response Time
- ✍ Web Response Time
- ✍ DNS Response Time
- ✍ Email Response Time
- ✍ FTP Response Time
- ✍ And many more..

Flexible, Customizable Reports

- ✍ Informational pre-configured reports
- ✍ Strong, highly configurable, reporting
- ✍ Multiple sub-reports within a single report
- ✍ Option of generating multiple reports in parallel for comparison and analysis
- ✍ Make run-time changes to report specifications
- ✍ User specific access to reports
- ✍ Scheduled automatic Reports directly sent by the system
- ✍ Report copying
- ✍ Real time reports

Service Assurance

- ✍ Resource level SLA specification
- ✍ Support for multiple SLA templates
- ✍ Option for specifying maintenance and business hours
- ✍ Option for predictive threshold setting with alert option
- ✍ Drill-down multi-level SLA summary
- ✍ Template-wise SLA summary

Configuration Management

- ✍ Scheduled Backup of Configuration
- ✍ Configuration Change Comparison
- ✍ Notification on Change

Patch Management & Software Deployment

- ✍ Centralized Patch Server
- ✍ Patch Scheduling
- ✍ Patch Approval
- ✍ Patch Deployment

Personalized Accounts and Role Management

- ✍ Multiple Account Types
- ✍ Password Change
- ✍ User Preferences
- ✍ User Groups

Data Management

- ✍ Configurable data purging thresholds
- ✍ Database Backup and Restore

Enhanced File Format Support

- ✍ PDF Export
- ✍ Doc Export
- ✍ CSV Export

Remote Monitoring

- ✍ Distributed multi-location monitoring with inbuilt replication

Summarized Software Configuration Details

- ✍ License Details
- ✍ Resource Details
- ✍ Process Details
- ✍ Thread Status
- ✍ Everest Parameters
- ✍ Database Status
- ✍ SNMP Trap Plug-ins

Accurate and Attractive Information Displays

- ✍ Customizable Graphs
- ✍ Numerical Statistics
- ✍ Speedometers
- ✍ Data Tables

User Friendly Diagnostic Tools

- ✍ PING
- ✍ SNMP Walk
- ✍ Trace Route

Extendibility

- ✍ XML
- ✍ Corba
- ✍ Protocol plug-ins
- ✍ Discovery Plug-ins
- ✍ New Vendor Plug-ins
- ✍ New Standards Plug-ins
- ✍ Notification Plug-ins

Comprehensive Security

- ✍ Encrypted Password
- ✍ Role-based Access Privileges
- ✍ DES Encryption

Help

- ✍ Online Help
- ✍ Tech Support Contact

Everest

Network Devices	Cisco Networks Juniper Networks Avaya Networks	Foundry Networks Extreme Networks Alcatel Routers	Printers Power backup devices
Servers	Windows Servers Unix Servers Linux Servers Solaris Servers	MySQL Servers MSSQL Servers Oracle Servers Apache Servers	Radius Servers IIS Servers Domino Servers Novel Netware
Applications	Web Applications IIS Apache Share Point Web Logic Web Sphere Tomcat	Collaboration MS Exchange Domino Lotus Notes Send mail Novel Netwaremcat	Database Applications MySQL, MSSQL Oracle, U2 and Db2 Other Applications VM Ware, Citrix Active Directory
Services	DNS IMAP2 NTP SMTP MySQL Jboss	HTTP POP NNTP SNMP MSSQL SAP	FTP NFS Radius SSH Oracle Syslog

This datasheet provides a brief summary of Everest's features from a broad-based point of view. For more information and additional details about Everest, please contact us at.



About DMX

Aspired to be a forerunning IT solution provider, DMX Technologies specializes in providing a wide range of digital multimedia solutions, network infrastructure and professional services to service providers, cable TV operators, broadcasters, media and entertainment corporations, mobile operators and enterprises. Established in 1999, DMX has built an extensive regional network in the Asia Pacific region, including Greater China, Indonesia, India, Korea, Malaysia and Singapore.

For more information about DMX Technologies, please visit:
www.dmxtechnologies.com

HSBSoft Technologies Pvt. Ltd. (DMX Partner)

No. 1362, 9th Cross, JP Nagar 1st Phase,
Bangalore 560078, INDIA.
Tel : +91 80 2245 0884, Fax : +91 80 2664 5974
Sales : sales@hsbsoft.com

